

Homelessness

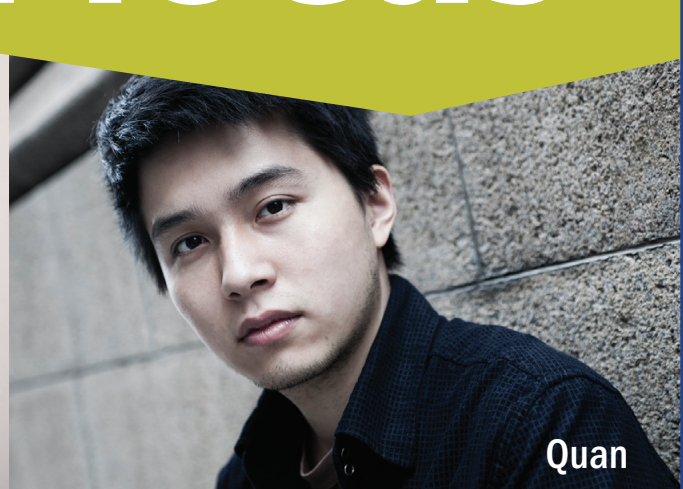
in focus



Debra & Emma



Joan



Quan

IT'S ABOUT COMMUNITY!

A Community Response to Homelessness

The communities of Maple Ridge, Pitt Meadows and Katzie have been working towards finding solutions to the issue of homelessness since 1999. The Caring Place, Iron Horse Youth Safe House, AHSS Community Outreach and Alouette Heights Supportive Housing all grew out the hard work of council, the Social Planning Advisory Committee, a Community Network of more than 50 local service providers and community organizations, and a huge swell of support from the whole community. Members of the community who wish to be involved in issues of housing and homelessness and participate in planning future community projects and interventions are invited to join the Housing Planning Table, a Task Group of the Maple Ridge-Pitt Meadows-Katzie Community Network. For more information about joining the Housing Planning Table, contact the chair: Darrell_Pilgrim@can.salvationarmy.org.

Shelter

The Caring Place, operated by the Salvation Army, has a 25-bed emergency shelter for men and women year around, and provides shelter for an additional 15 people during Cold Wet Weather Season. 604-463-8296, www.caringplace.ca.

Iron Horse Youth Safe House, operated by Alouette Home Start Society, is a shelter for homeless youth between the ages of 13 and 18. 604-466-2665. AHSS also provides support to youth aged 17 to 24 to help them find and maintain housing through its Route 29 program. Visit alouettehomestart.com for more information.

Community Outreach and Advocacy

Community Outreach and Advocacy Workers connect people who are homeless and at risk of homelessness to housing, income assistance and community-based support.

The Caring Place has three Community Advocates who work with people who come to the shelter to connect them to the support that they need in the community. 604-463-8296, ext 112, www.caringplace.ca.

Alouette Home Start Society has two full time Community Outreach Workers. Anyone needing support or who would like to refer someone needing support can contact AHSS Community Outreach at 604-466-3031, ext 112, outreach@alouettehomestart.com.

The Canadian Mental Health Association has two Outreach Workers in Maple Ridge. 604-516-8080, www.simonfraser.cmha.bc.ca.

Community Outreach and Advocacy Workers refer their clients to a whole host of local community partners and services. Providing needed support and resources is a truly collaborative undertaking in this community!

Housing

The Genesis Program at the Caring Place provides 15 Transitional Housing Beds. Genesis is a co-ed residential program for those who want a safe, secure and supportive living environment until they are ready to step out on their own. It helps bridge the gap between staying in a shelter or in treatment facility and independent living. 604-463-8296 ext 122 www.caringplace.ca.

Alouette Heights, operated by the Alouette Home Start Society, provides 45 units of supportive housing for low-income tenants who were homeless or at risk of homelessness and who reside or have ties to this community. Tenants need to meet the criteria to qualify for placement on the BC Housing Supportive Housing Registry www.bchousing.org/Options/Supportive_Housing, Alouette Heights has support staff on site 24/7 to

support tenants with Individualized program plans and to help them connect to community agencies and organizations that can help them meet their goals. 604-466-3031 Ext 111, alouettehomestart.com.

The Alouette Home Start Society is committed the goal of ensuring that the Alouette Heights project is an asset to the community and to listen to the voice of the community. Neighbours and interested individuals who wish to participate on a Community Advisory Committee are invited to contact Stephanie Ediger, Executive Director of AHSS at 604-466-3031, Ext 113, ed@alouettehomestart.com.

Poverty and Food Security

Poverty is the leading cause of homelessness. A lack of affordable housing across the region means that people need to spend a large portion of their income on housing. Housing is considered affordable if it costs one-third or less of a person's gross income. Often, in order to stay housed, people find it difficult to pay for basic necessities like food.

The Meal Program at The Caring Place serves over 10,000 meals a month at the shelter, and sends 168 lunches a day to school children in the community. Many of the people who access the Meal Program are not homeless, but need this kind of support to stay housed. 604-463-8296 ext 123, tim.sarsfield@caringplace.ca.

The Friends in Need Food Bank provides food to individuals, families and community service providers. 604-466-3663. Golden Ears FEAST (Food Education & Action Strategy Table) is a community collaboration made up of individuals and groups that have a stake in our local food system. For more information contact Candace Gordon at ciegordon@gmail.com.

For more information about homelessness issues and solutions, visit stophomelessness.ca



THE NEWS

stophomelessness.ca

IN CANADA
80%
OF
HOMELESS PEOPLE
DON'T LIVE ON
THE STREET."



WE CAN FIX THIS.
We can permanently
and cost-effectively
solve homelessness.

Find out how at stophomelessness.ca
#startwithhome